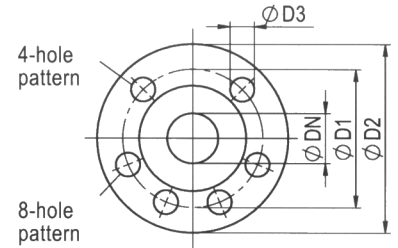
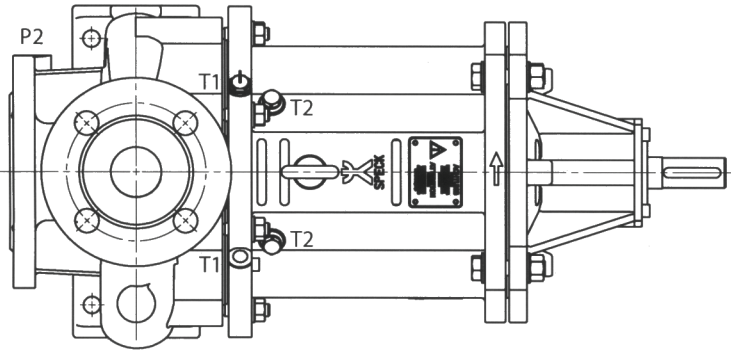


Flange dimensions EN 1092-2



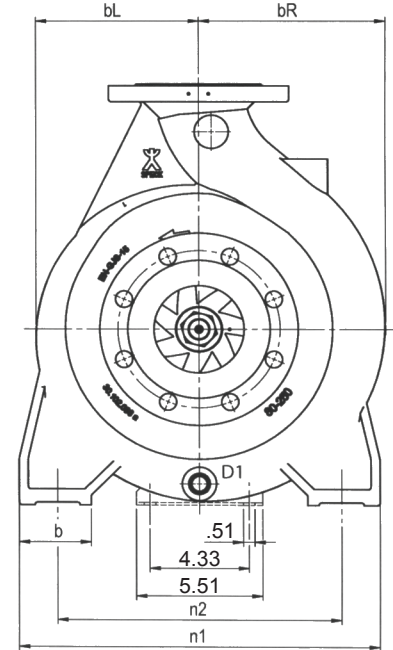
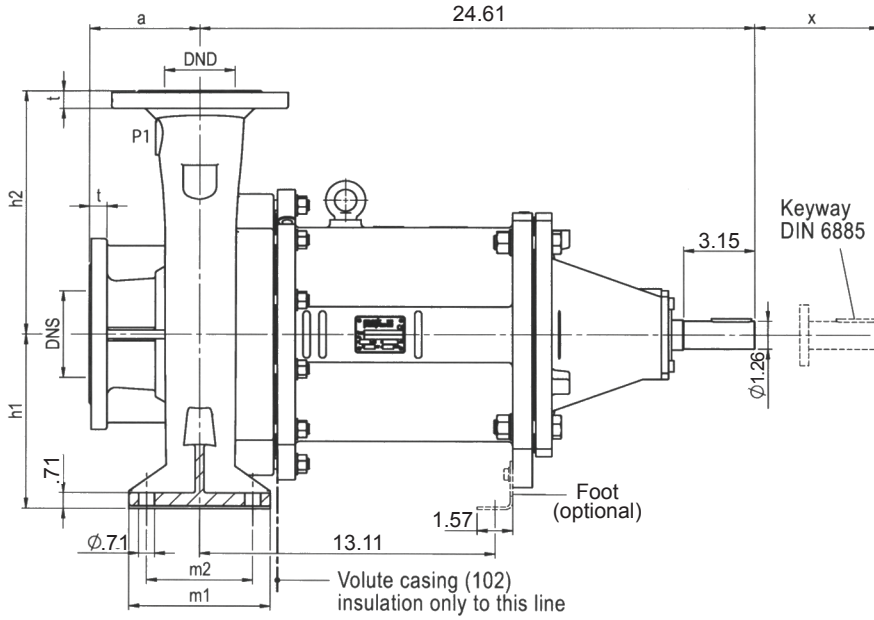
Flange dimensions in acc.with DIN EN 1092-2

ØDN	ØD2	ØD1	t	ØD3	# Holes
1.26	5.51	3.94	.71		
1.57	5.91	4.33	.71		
1.97	6.50	4.92	.79	.75	4
2.56	7.28	5.71	.79		
3.15	7.87	6.30	.87		
3.94	8.66	7.09	.95		8

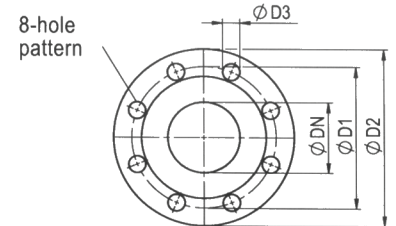
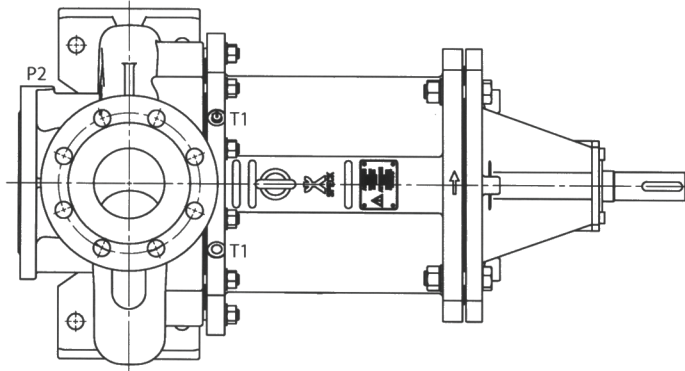
Utility Connections

<b>P1</b>	Outlet pressure indicator connection (not drilled)	<b>1/4 NPT</b>
<b>P2</b>	Inlet pressure indicator connection (not drilled)	<b>1/8 NPT</b>
<b>D1</b>	Volute casing drain	<b>3/8 NPT</b>
<b>T1</b>	Temperature sensor PT 100 MK 110/135	<b>1/4 NPT</b>
<b>T2</b>	Temperature sensor PT 100 MK 75	<b>1/4 NPT</b>

Pump Size	Flanges		Pump Dimensions					Foot Dimensions					Pull-Out x
	DNS	DND	a	bL	bR	h1	h2	b	m1	m2	n1	n2	
32-160													
32-200	2	1.25	3.15	4.84	4.84	6.30	7.09	1.97	3.94	2.76	9.45	7.48	
32-250			3.94	5.99	6.42	7.09	8.86	2.56	4.92	3.74	12.60	9.84	
40-160			3.15	4.84	5.08	5.20	6.30				9.45	7.48	
40-200		1.5		5	5.55	6.30	7.09	1.97	3.94	2.76	10.43	8.35	
40-250	2.5			5.95	6.30	7.09	8.86	2.56	4.92	3.74	12.60	9.84	4.33
50-160				4.84	5.35	6.30	7.09						
50-200		2	3.94	5.11	5.83	6.30	7.87	1.97	3.94	2.76	10.43	8.35	
50-250				6.18	6.69	7.09	8.86				12.60	9.84	
65-160	3.25	2.5		4.88	5.95	6.30	7.87				11.02	8.35	
65-200				5.35	6.46			2.56	4.92	3.74			
80-160	4	3.25	4.93	5.47	6.85	7.09	8.86				12.60	9.84	



Flange dimensions EN 1092-2



Flange dimensions in acc.with DIN EN 1092-2

ØDN	ØD2	ØD1	t	ØD3	# Holes
1.26	5.51	3.94	.71	.75	4
1.57	5.91	4.33	.71		
1.97	6.50	4.92	.79		
2.56	7.28	5.71	.79		
3.15	7.87	6.30	.87	8	
3.94	8.66	7.09	.95		

Utility Connections

<b>P1</b>	Outlet pressure indicator connection (not drilled)	<b>1/4 NPT</b>
<b>P2</b>	Inlet pressure indicator connection (not drilled)	<b>1/8 NPT</b>
<b>D1</b>	Volute casing drain	<b>3/8 NPT</b>
<b>T1</b>	Temperature sensor PT 100 MK 110/135	<b>1/4 NPT</b>
<b>T2</b>	Temperature sensor PT 100 MK 75	<b>1/4 NPT</b>

Pump Size	Flanges		Pump Dimensions					Foot Dimensions					Pull-Out x
	DNS	DND	a	bL	bR	h1	h2	b	m1	m2	n1	n2	
<b>80-250</b>	3.94	3.15	4.92	7.13	8.15	7.87	11.02	3.15	6.30	4.72	15.75	12.40	4.33