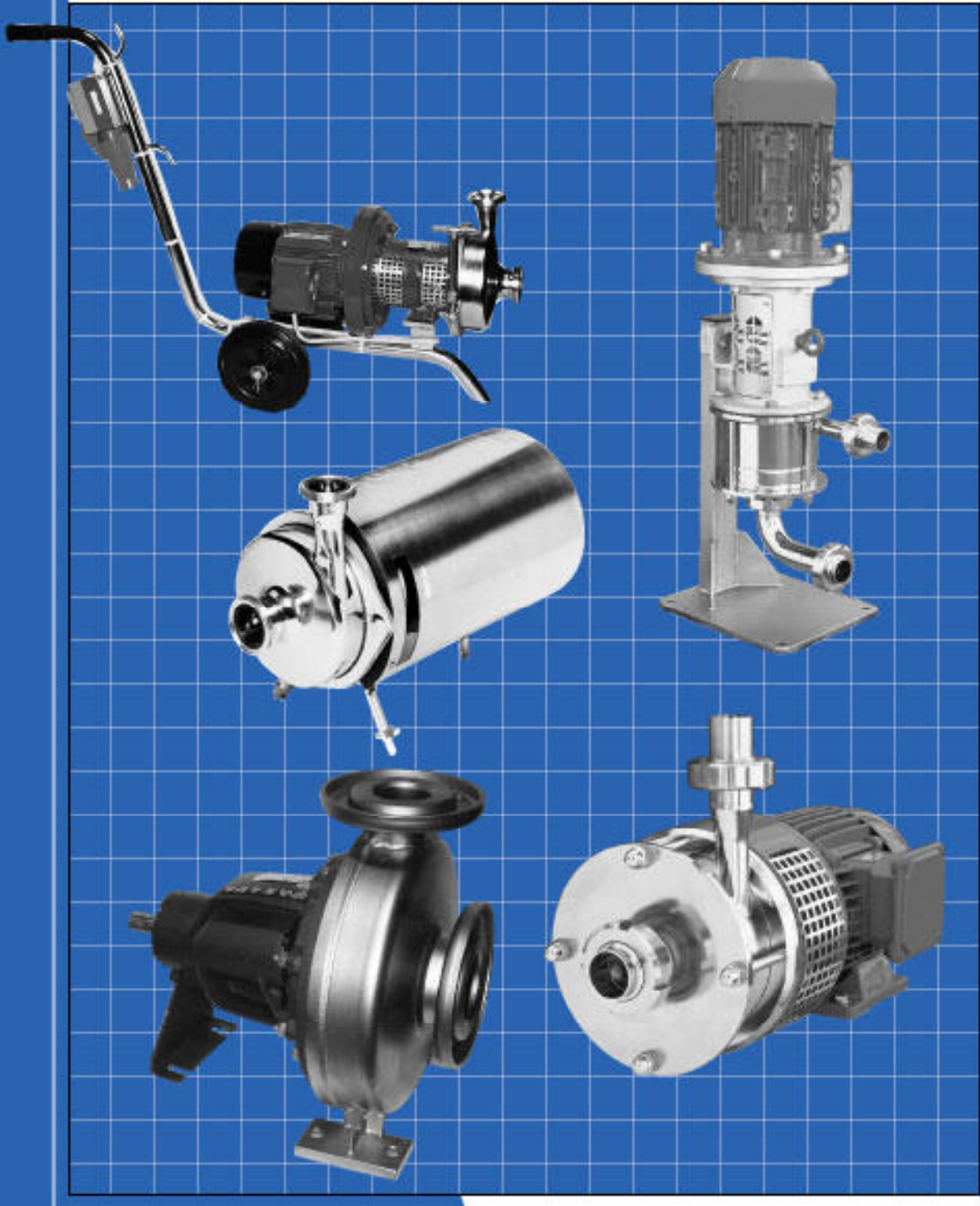




**Shanley Pump
& Equipment, Inc.**



**The Most Complete Line
of Rolled Stainless Steel
Sanitary & Industrial
Product Pumps!**

Quality pump expertise right from the start...

Since 1862, HILGE has been developing the highest quality stainless steel sanitary pumps for ultrapure liquid transfer.

HILGE single and multi-stage centrifugal pumps provide exceptional solutions for specialized applications and processes in the pharmaceutical, brewery, beverage, food, chemical, environmental and textile industries.

Where stringent finishes and cleanability are paramount requirements, HILGE excels! With its "pore-free", cold rolled stainless steel material design that produces a surface finish to 0.4 μm , 240 grit and low ($\leq 1\%$) ferrite content.

Adapta[®] the interchangeable bearing adapter alternative

Adapta[®] is an innovative approach to conventional plug-in shaft installations. The unique modular bearing adapter housing system accommodates a wide range of drive units and pump models. Adapta[®] is easily installed on all standard and NEMA motors, using only an adapter flange.

The pump shaft is connected to the drive unit with a standard compact flexible coupling. With a built-in double ball bearing modular construction, the Adapta[®] achieves long life and low pump maintenance.

Available in bare shaft foot mount or a space-saving vertical design configuration, it ensures optimal drainage of the pump casing through the suction port.



Only the best materials...

The added value of Hilge pumps results from their use of reliable, titanium-stabilized, rolled nickel-chrome-molybdenum steel material.

Compacted in a seven-stage rolling process, and further stiffened in deep drawing under 500 tons, this material offers properties that are unparalleled. This material goes through a lot before it goes into our pumps.

CAST



ROLLED



The surfaces of cast and rolled materials under the microscope

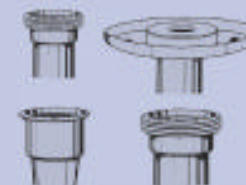
With application flexibility...



Four different impeller designs for adaptability to the medium.



Only three sizes for the self-cooling and cleaning mechanical seal.



A wide choice of nominal diameters and connections are available for suction and discharge, allowing for custom fit options in flow velocities and adaptation to the pipework.

And the gentle handling design...

The *Sensi-Flow* system uses long, hydro-dynamically shaped impeller blades and strategically placed impellers to reduce the velocity gradient and minimize shear.



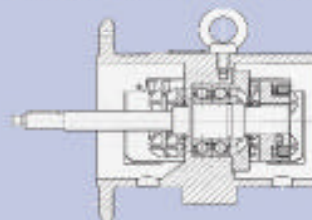
The pump housing has been designed so that the liquid particles, instead of colliding, are smoothly engaged and the liquid only moves in streamlines.



The Hilge design has been proven in independent studies to yield the lowest shear, resulting in gentle product handling.

resulting in

Adapta[®] bearing design...



A universal drive construction with high rigidity, plug-in shaft to take NEMA standard motors.

...yield the Hilge advantage

Our knowledgeable and experienced sales engineering staff is available to answer your questions and create a custom pump solution for you.



Hilge offers a complete range of stainless steel sanitary and industrial centrifugal pumps. Pumps are sized for 50Hz, 60Hz, variable speeds, and available in special constructions.



Euro-HYCIA®

Single stage, end suction, centrifugal pump, close coupled construction in 316Ti stainless steel. Four impeller designs for one case size: shrouded, semi-open, free flow and channel impellers. Port connections can be customized to user's needs. Shaft seal with single or double mechanical seal. CIPable. Ideal for product feed, circulation or transfer. Can be used with filters, plate exchangers, and fillers. The Adapta® modular bearing housing system is available on the Euro-Hygia® I and II models for easy motor installations.

Model	Max. Flow 60Hz GPM (m ³ /hr)	Max. Head 60Hz Feet (meters)
Euro-Hygia® I	160 (36)	211 (64)
Euro-Hygia® II	745 (170)	329 (94)
Euro-Hygia® III	1137 (189)	314 (96)

Euro-HYCIA®-CN



Euro-Hygia® Super features stainless steel motor shroud strategically designed to minimize direct moisture exposure, but still maintain heat dissipation. Stainless steel adjustable peg feet minimize floor contact. Quick release case clamp.

Euro-Hygia®-CN package option will include pump mounted to fabricated base with flexible coupling and recommended electric motor.

Euro-HYCIA® SUPER



durietta 0

Small, single or multi-stage, end suction centrifugal pump in rolled 316L stainless steel; close coupled construction. Multi-stage designs also available in vertical construction. Impellers are semi-open design. Port connections can be customized to user's needs. Shaft seal with single mechanical seal only. CIPable. Ideal for lower flow applications for product feed, circulation or transfer. Multi-stage designs ideal for booster, filling, or filtration needs.

durietta 0/1	46 (10)	71 (22)
durietta 0/2	22 (5)	138 (42)
durietta 0/3	20 (4.5)	197 (60)



HYGIANA

Multi-stage, end suction, high pressure, centrifugal pump in rolled 316L stainless steel. Available in Bloc (close coupled), Super (stainless shroud and peg feet), CN (bare shaft foot mount), or vertical configuration. Impellers are shrouded and semi-open. Port connections can be customized to user's needs. Shaft seal with single or double mechanical seal. CIPable. Ideal for higher flow applications requiring higher pressure such as booster or filtration needs. The Adapta® modular bearing housing system is available on the Hygiana II models for easy motor installations.

Hygiana II	197 (45)	736 (224)
Hygiana III	356 (81)	851 (259)



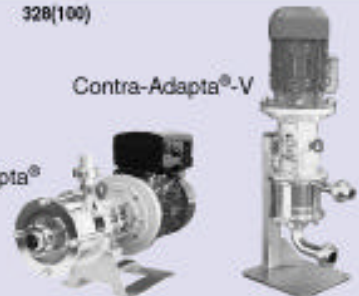
Contra

Single and multi-stage end-suction centrifugal pump in rolled 316L stainless steel. Available in horizontal (bare shaft foot mount), or vertical configuration design. Surface material reduces roughness, creating a "pore-free" finish. Ideal for sterile and CIP applications, eliminating particle contamination residue and build-up. Vertical design is completely self-draining. Low NPSH values. Ideal for heavy duty applications. Also ideal for low flow, high head applications.

Contra	88(20)	328(100)
--------	--------	----------

Contra-Adapta®-V

Contra-Adapta®



SIPLA

Liquid ring, self priming centrifugal pump in 316 stainless steel. Available in Bloc (close coupled), Super (stainless shroud and peg feet), or CN (bare shaft foot mount) models. Port connections can be customized to user's needs. Shaft seal with single or double mechanical seal. CIPable. Ability to handle liquids with entrained air. Particularly suited to CIP scavenge applications, low shear for yeast harvesting. The Adapta® modular bearing housing system is available on the Sipla 6, 12 and 18 models for easy motor installations.

Sipla 6	33 (8)	154 (47)
Sipla 12	63 (14)	115 (35)
Sipla 18	110 (25)	141 (43)
Sipla 26	110 (25)	161 (49)
Sipla 28	132 (30)	197 (60)
Sipla 52	220 (50)	138 (42)



MAXANA / MAXA

Single stage, end suction, centrifugal pump, close coupled construction in 316Ti stainless steel. Available in close coupled or bare shaft foot mount configuration. Impellers are shrouded style. Flanges to ANSI or DIN standard. Shaft seal with single or double mechanical seal. Competitively priced due to state of the art manufacturing methods. Low NPSH values. Ideal for heavy duty applications.

Maxana	872 (196)	299 (91)
Maxa	4522 (1027)	929 (283)



Nationwide Distribution Network

Birmingham, AL
Daphne, AL

Ashdown, AR
Little Rock, AR
Springdale, AR

Bakersfield, CA
Los Angeles, CA
San Francisco, CA

Denver, CO

Jacksonville, FL
Tampa, FL

Atlanta, GA
Augusta, GA
Dalton, GA

Honolulu, HI

Des Moines, IA

Chicago, IL

Indianapolis, IN

New Orleans, LA

Boston, MA

Detroit, MI
Grand Rapids, MI
Iron Mt., MI

Minneapolis, MN

St. Louis, MO

Charlotte, NC
Greensboro, NC
Raleigh, NC

Omaha, NE

Montvale, NJ

Buffalo, NY
Albany, NY

Cincinnati, OH
Cleveland, OH

Tulsa, OK

Philadelphia, PA
Pittsburgh, PA

Greenville, SC

Memphis, TN

Bandera, TX
Beaumont, TX
Dallas, TX
Houston, TX
Longview, TX
Midland, TX
Tyler, TX

Richmond, VA
Roanoke, VA

Seattle, WA
Vancouver, WA

Milwaukee, WI



■ CORPORATE OFFICE



**Shanley Pump
& Equipment, Inc.**

2525 S. Clearbrook Drive
Arlington Heights, IL 60005-4623

Phone (847) 439-9200

Fax (847) 439-9388

Visit our Website at <http://www.shanleypump.com>