

PCX-WTG

PCX-WTG Two Screw Pump Series

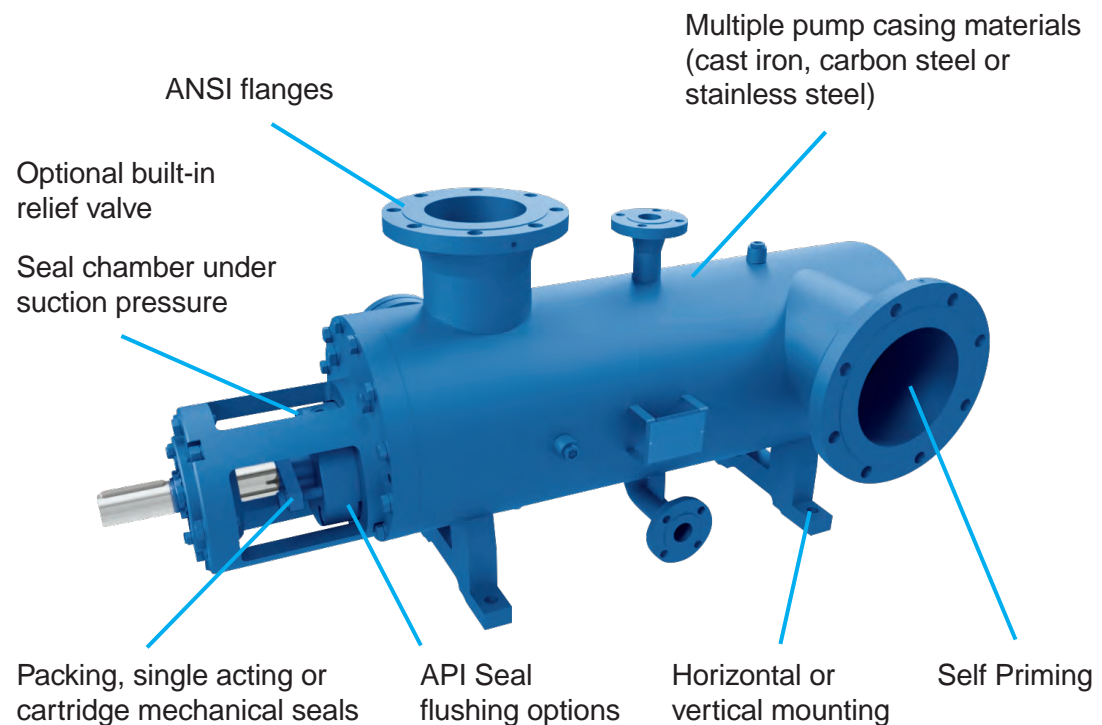
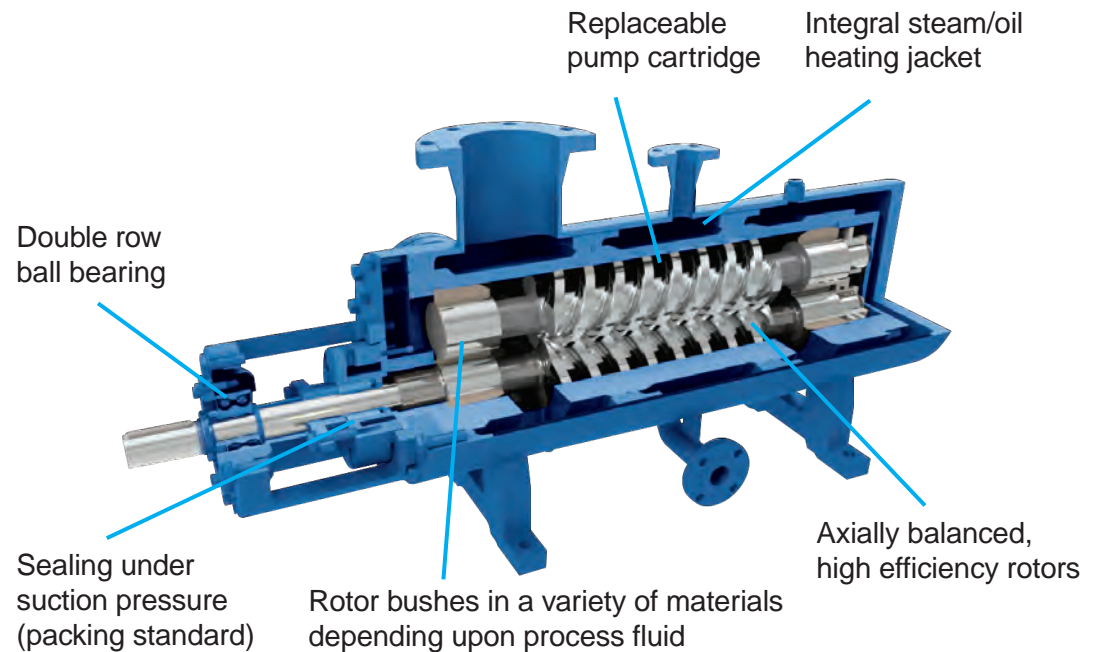
**Shanley Pump
& Equipment, Inc.**



PCX-WTG

Features

- Internally, the pump only has non-wearing, rolling contact between the two screws, and zero contact between the screws and the liner
- Axial loads are balanced, no wear plate or end clearance to adjust, no overhung loads
- Radial loads are compensated for by oversized rotor bushes, which also prevent contact between the screws and the liner
- The PCX-WTG maintenance friendly design incorporates a replaceable cartridge for easy repair, and only one component in inventory
- A full housing jacket ensures thorough heating into the seal chamber, to reduce the frequency of maintenance headaches and costs
- The sealing chamber is under suction pressure, reducing leakage and maintenance costs
- Additionally, the PCX-WTG operates at nominal motor speeds, eliminating the need for a gearbox or v-belt drive










**Shanley Pump
& Equipment, Inc.**

2525 S. Clearbrook Drive
Arlington Heights, IL 60005
P: (847) 439-9200
F: (847) 439-9388
sales@shanleypump.com
www.shanleypump.com

PCX-WTG

Main Applications

-  Asphalt and PMA
-  Pitch
-  Tar
-  Lube Oil
-  Fuel Oil
-  Diesel Oil
-  Vacuum Gas Oil (VGO)

Operating Conditions

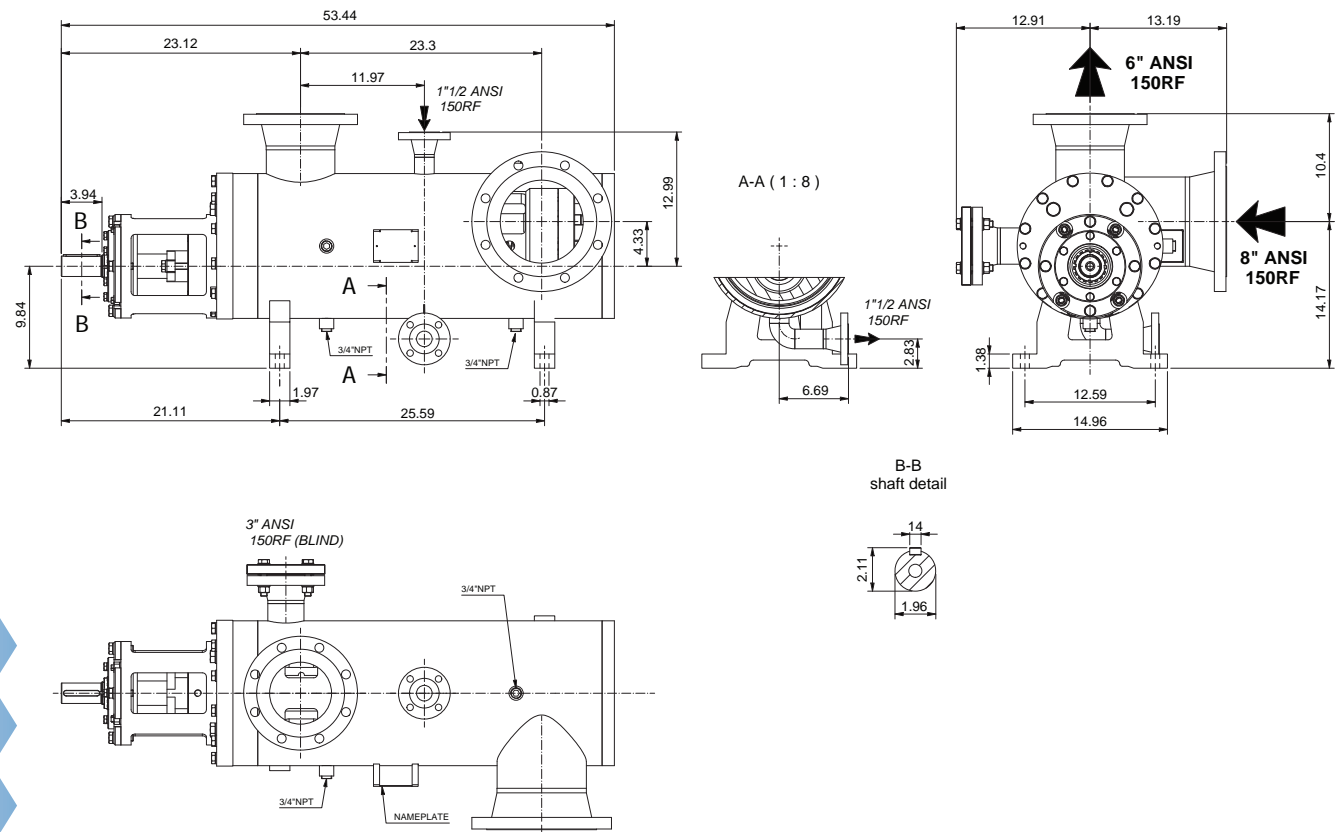
Flow rate **5 to 2200 GPM**

Viscosity range **1 to 100,000 cSt**

Outlet pressure range **15 to 232 psig**

Inlet pressure range **vacuum to 145 psig**

Temperature Range **Up to 572°F**



Shanley Pump & Equipment, Inc.

2525 S. Clearbrook Drive
Arlington Heights, IL 60005
P: (847) 439-9200
F: (847) 439-9388
sales@shanleypump.com
www.shanleypump.com