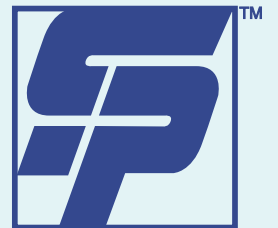


EDUR[®]

LUB

Vertical In-Line Centrifugal Cooling Pumps

**Shanley Pump
& Equipment, Inc.**



LUB EDUR®

Features

The EDUR LUB Series of Vertical Inline Centrifugal Cooling Pumps set the standard for a vertical all-purpose single-stage general purpose circulation pump for general application usage for clear or slightly polluted liquids. The LUB Series space-saving design makes it a desired pump for limited space areas where the pump "footprint" is at a premium.

Description

The LUB Series standard pull-back-design allows for easy maintenance while its design allows for easy mounting in any position in stable pipe-lines or a cantilevered mounting setup. The Pump can come complete with either single or double acting Mechanical Seals and is designed as a centrifugal pump with open impellers.

The LUB Series also has the ability to transport small amounts of gases in the pumping liquid medium without cavitation. For more information about this feature and the limits of the amounts of gas that can carry safely through the pump, please contact Shanley Pump and Equipment today.

The EDUR LUB Series Vertical Inline General Application Centrifugal Cooling Pump operates at pressures up to 145 PSI at a temperature range of -40°F to +284°F with a Viscosity of 115 mm²/s with a series maximum flow rate of 969 GPM.

The EDUR LUB Series Vertical Inline General Application Centrifugal Cooling Pump is made from Cast Iron. Shanley Pump and Equipment, Inc. carries a stock of these pumps for immediate delivery.



Shanley Pump & Equipment, Inc.
 2525 S. Clearbrook Drive
 Arlington Heights, IL 60005
P: 847.439.9200
F: 847.439.9388
 www.shanleypump.com
 sales@shanleypump.com

Usage

The LUB Series is a popular pump for industry with many applications including water supply, cooling applications and technology, machine and apparatus engineering and new building applications.

If you have any questions about the EDUR LUB Series of Vertical Inline General Application Centrifugal Cooling Pumps for clear or slightly polluted liquids please feel free to contact a Shanley Pump representative. We'll be glad to answer any questions you have.

Main Applications

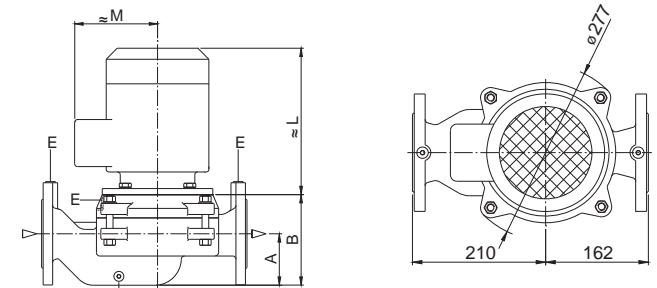
-  Marine Application Pumps
-  Process Technology Pumps
-  Plant Engineering Pumps
-  Steel Industry Pumps
-  Clear Liquids
-  Slightly Polluted Liquids
-  Steel Manufacturing
-  Recirculation Systems Pumps
-  Hot/Cold Water Pumping

GPM up to 969 GPM

PSI 0 - 145 PSI

TEMP -40°F - +284°F

HEAD 180 ft.

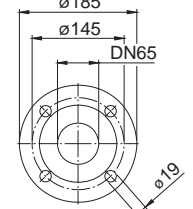


E Screwed plug G1/4 for drain and manometer connection



Dimensions Drawings

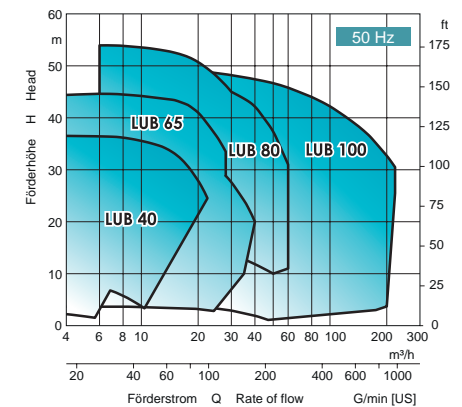
Click here for complete dimensional drawings



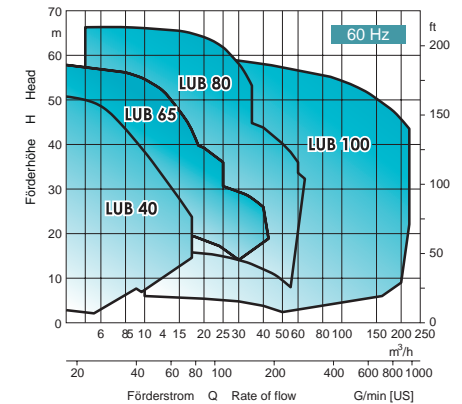
Suction- and delivery flange DIN EN 1092-2, PN16



60Hz Performance Curve



50Hz Performance Curve



Click here for complete Flow Curves