

\* OT Configuration

PA

Submersable Screw Pumps

Shanley Pump  
& Equipment, Inc.



# PA

## Features

The SEIM PA Series Submersable 3-Screw Pump is SEIM's best seller worldwide. These economical screw pumps are designed for submerged applications in the lube oil or hydraulic oil tank.

This is ideal for use in difficult locations where a normal pump will not fit. It's simple yet robust construction ensure years of operability with minimal complications.

## Description

The SEIM PA Series Submersable Screw Pump operates at 62.5 to 224 GPM at pressures up to 1740 PSI at a temperature range of 32° to 212 ° F.

**SEIM PA Series 3-screw pump are ideal for:**

Lubrication Systems  
Filtration Systems  
Recirculation Systems  
Cooling Systems  
Hydraulic Systems

SEIM screws pumps are volumetric self-priming pumps suited to handle oils and fluids with a minimum lubricating property. The pumps design makes them intrinsically reliable and efficient in their applications.



**Shanley Pump & Equipment, Inc.**  
2525 S. Clearbrook Drive  
Arlington Heights, IL 60005  
P: 847.439.9200  
F: 847.439.9388  
www.shanleypump.com  
sales@shanleypump.com








## Usage

**The functional characteristics of a Screw pump are:**

Very low noise levels  
Wide range viscosity compatibility  
High rotation rates = minimizing the size and cost of the pump  
No vibrations  
Minimum sensitivity to particle pollution  
High self-priming capacity  
Special design for systems with entrained air in the lubricant

For over 30 years SEIM has been supporting the pumping industry with their innovation and expertise in the pumping and handling of oils and viscous chemicals.

## Main Applications

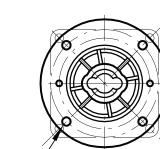
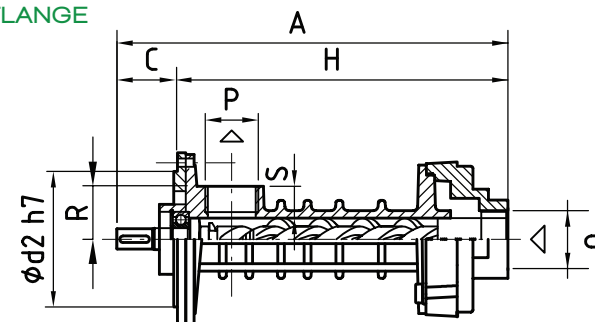
-  Marine Pumping Systems
-  Oils & Hydraulic Fluids Pumping
-  High Viscosity Liquids Pumping
-  Shipyard Construction Pumping
-  Recirculation Systems Applications
-  Lubrication Systems Applications
-  Light Oil Recirculation Systems

**GPM** 62.5 - 224 GPM

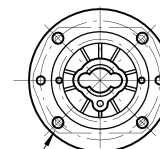
**PSI** up to 1740 PSI

**TEMP** 32°F - +212°F

OT  
FLANGE

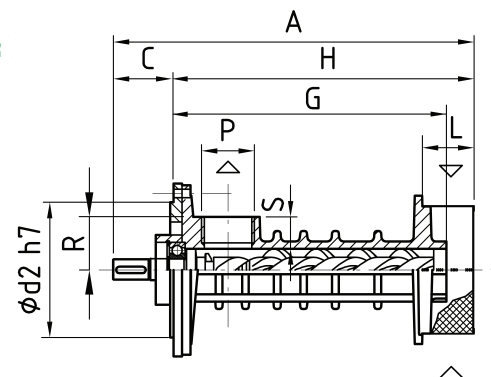


4 Holes DIA Ø14  
on d160



4 Holes DIA Ø18  
on d200

OM  
STRAINER



STEEL  
CAST

 Dimensions  
Drawings

[Click here for complete dimensional drawings](#)



**Performance Curve**

For specific applications data on viscosity and pressure please contact us and we send you details about flow rates.



To download our screw pump fax form click here